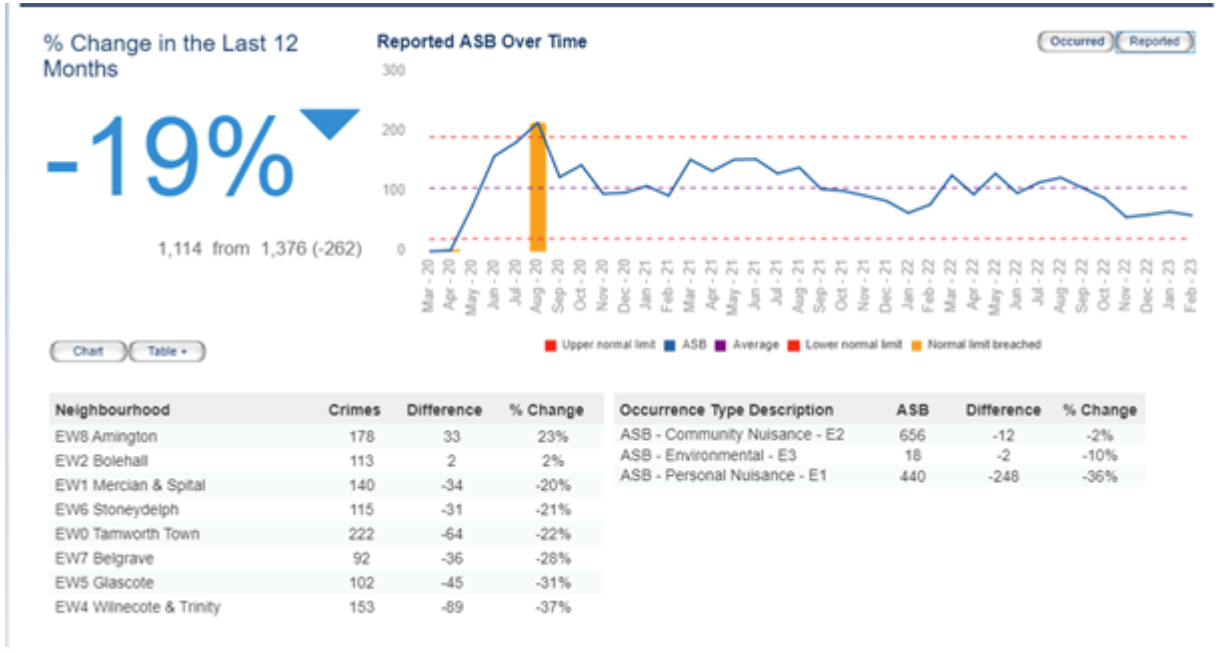
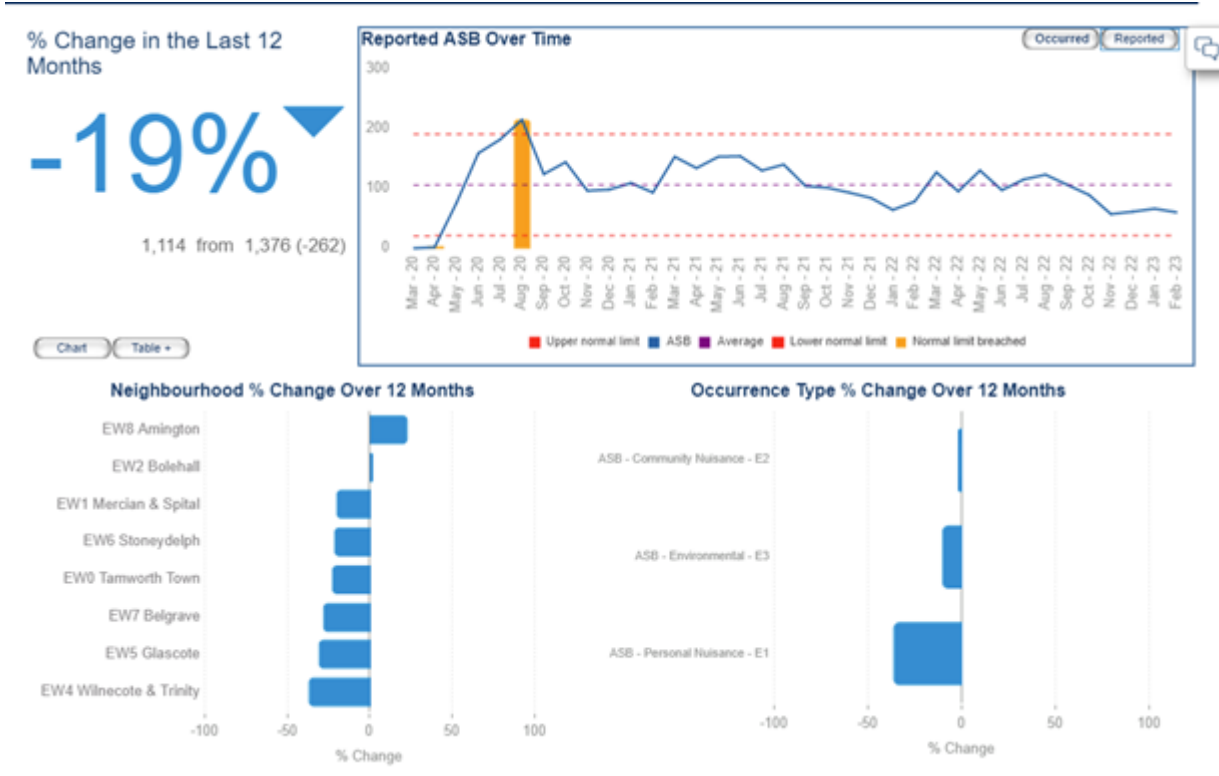


Tamworth Community Safety Partnership

Community Safety Plan Progress Report (2022 Refresh)

Priority Theme 1: Anti-Social Behaviour

Background



Progress to Date

The powers within the ASB Crime and Policing Act 2014 are shared by Council and Police. Enforcement action is taken by a joint approach and recorded via the weekly ASB meeting. Community Protection Warnings and Notices are issued by PCSOs, Community Wardens, Neighbourhoods staff and Partnership Support and Enforcement officer.

Partnership ASB Interventions Year 2022

72 First stage Letters Issued
15 Community Protection Notice
39 Community Protection Warnings
6 Cannabis Letters
11 Good Neighbour Agreement
15 Multi-Agency Meetings (with parents)

Staffordshire Fire and Rescue recorded 112 Secondary Fires (small outdoor fires, not involving people or property) of which 91 were attended during the month of August due to the Hot weather and ASB.

Performance Issues

Access to relevant Services – diversionary services have been identified and individuals identified in ASB are being directed and signed up to activities such as boxing.

Recording standards around Stalking harassment and neighbour disputes has altered for Police reporting. This means that repeat calls from neighbours will no longer be recorded as ASB and will there for see a decline in these figures year on year.

Next Steps

Operation Cadence is a directed communications and engagement operation to promote the change in operating model to a local Policing Model throughout Staffordshire, this continues around community events across the Local Policing Team

Partners are working closely together to review previous incidents of Travelling encampments within the Tamworth Area and link this to Staffordshire as a whole. There will be an enhanced and focused plan and engagement strategy to inform all parties including local communities and the members of any encampment.

Staffordshire Fire and Rescue, in partnership with Staffordshire Police, have conducted School visits to talk about the dangers of Fires. This will continue prior to School holidays 2023 and using the new feature of Community News Flashes.

Recommendations

Review of Problem-solving recording and monitoring across the Local Policing Team, Tamworth Borough Council and wider Community Safety Partnership to show de-escalation of incidents and ensure best practice, this will include specific leads around problem solving and enhanced training.

Consideration of how to better overlay Tamworth Borough Council data across Local Policing data and other Community Safety Partnership members such as Harmony

Priority Theme 2:	Car Key Burglary & Vehicle Theft
--------------------------	---

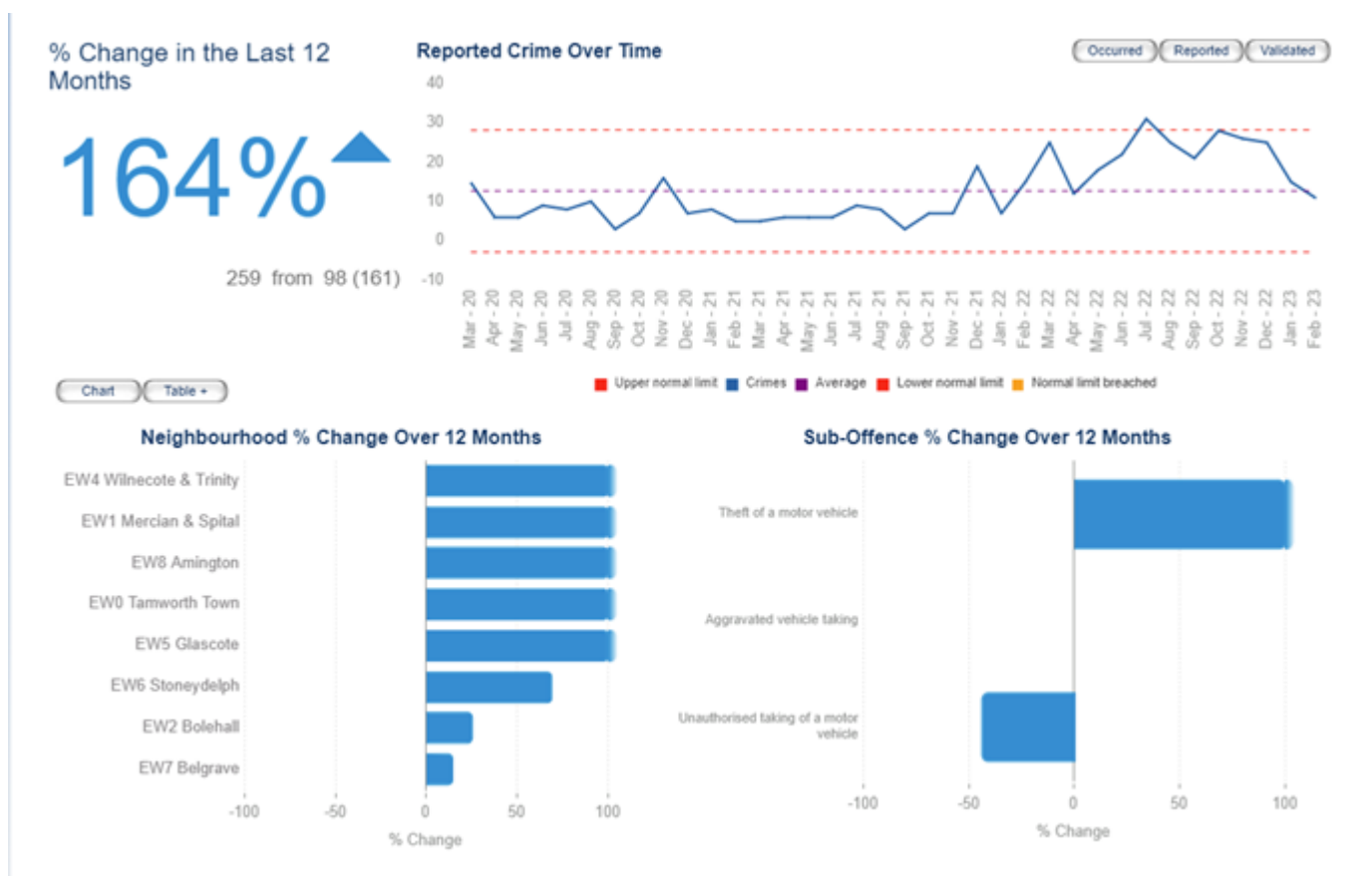
Background

Vehicle Crime (including Car Key Burglary and Keyless Thefts) has had some spikes that show a reoccurring theme in the Tamworth area. This theme is similar across the south of the county and neighbouring forces.

The majority of these thefts are keyless, otherwise known as relay theft, where criminals use two small boxes of electronics, typically working in pairs with one holding a relay amplifier by the property, and the other a relay transmitter next to the car; receiver picks up and replicates the amplified signal from the key, the car will be fooled into thinking the legitimate owner is there, allowing the vehicle to be unlocked and driven away. In Tamworth the cars that have been targeted seem to be mainly Fords and Range Rovers

Staffordshire Police have an overarching intelligence and evidence gathering process, under Operation Bormus, to target individuals believed responsible and this has seen some excellent arrests and disruption.

Progress to Date



Crime Dashboard

% Change in the Last 12 Months

164% ▲

259 from 98 (161)

Reported Crime Over Time

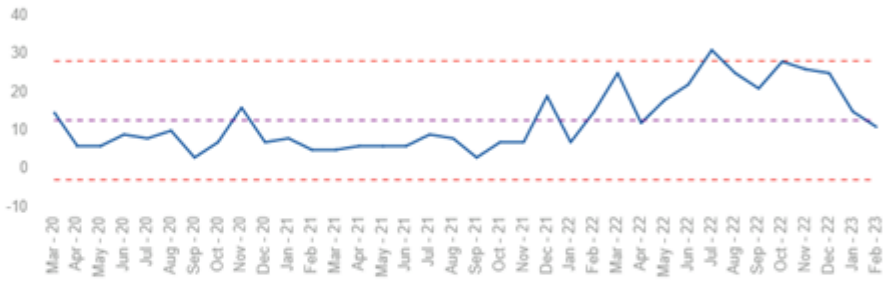


Chart Table

Neighbourhood	Crimes	Difference	% Change	Sub-Offence	Crimes	Difference	% Change
EW4 Wilnecote & Trinity	58	42	263%	Theft of a motor vehicle	246	168	215%
EW1 Mercian & Spital	56	39	229%	Aggravated vehicle taking	4	0	0%
EW8 Amington	32	22	220%	Unauthorised taking of a motor vehicle	9	-7	-44%
EW0 Tamworth Town	53	34	179%				
EW5 Glascote	21	12	133%				
EW6 Stoneydelph	22	9	69%				
EW2 Bolehall	10	2	25%				
EW7 Belgrave	8	1	14%				

Local Police have been working closely with the Staffordshire Police Priorities Team, the Roads Policing Team and CMPG (Central Motorway Police Group) to tackle these issues with Policing Operations in and around the area. These have involved conducting stopping of people/vehicles, as well as information gathering.

The operations have achieved positive results with vehicles seized and arrests made. Following intelligence gathering, cross force operations have also been conducted with some success, including the arrest of one of Tamworth’s top vehicle crime offenders. After he deliberately rammed into a police car, he was remanded in police custody and charged with 10 offences.

Funding Implications

The Partnership has funded, and officers are issuing faraday bags to victims and potential victims of crime to hopefully prevent further keyless thefts from taking place. Local engagement events/leaflet drops are being carried out offering residents security/ crime prevention advice.

Media campaigns have also been carried out across the whole of the Tamworth Community Safety Partnership.

Next Steps

To continue joint operations with Warwickshire and West Midlands Police. Continuing High visibility patrols for public reassurance and to swiftly act on opportunities to detain and prosecute offenders.

Priority Theme 3: Community Cohesion and Tackling Extremism

Background

Community Cohesion describes the ability of all communities to function and grow in harmony together rather than in conflict. It can therefore be used as a measure of how well different minority and majority communities develop and relate to each other.

The Local Government Association defines a cohesive community as one where:

- There is a common vision and a sense of belonging for all communities
- The diversity of people's backgrounds and circumstances is appreciated and positively valued
- Those from different backgrounds have similar life opportunities.

Overall measure proposed by the Community Cohesion Unit and Auditor Commission is the: % of people surveyed feel that their local area is a place where people from different backgrounds can get on well together.

Steps to build community cohesion:

Develop proactive communication strategies, including challenging negative stereotyping within and between communities. Support the organisation of shared events, outings, and welcome events, as part of wider strategies to promote community cohesion and community engagement.

Partnership Actions

Several significant community cohesion issues arose during the summer of 2022 with concerns about the impact of gypsy and traveller groups in Tamworth and the set-up of hotel for asylum seeker accommodation.

The Partnership has taken a proactive approach to manage community expectations, outline equality duties and form wider strategies moving forward within the 2023-26 CSP plan.

Progress to Date

- A minimum of 3 community engagement events have taken place at the Assembly Rooms promoting voluntary sector organisations with positive feedback
- Tamworth has retained Dementia Friendly Community Status with a number of activities arranged during Dementia Action Week
- Tamworth Borough Council has completed the PREVENT Self-Assessment Tool and all staff have training as part of the safeguarding awareness to
- Representation at the Staffordshire Prevent Board
- All front-line staff/police colleagues have information about Uniting Staffordshire Against Hate Crime (USAH) and have referred 20 residents to the service.
- USAH have supported 10 residents of Tamworth and attended Tamworth Pride
- A Community Cohesion Officer will be in post from 13th March 2023 working in the Partnership
- Fortnightly Partnership meetings with partners to discuss any community issues or wellbeing concerns around asylum seekers
- Positive work with Community Together CIC to provide diversionary activity and posting volunteering
- Proactive and positive communication on Tamworth Borough Council website allowing communities to ask questions around asylum seekers
- Creation of a Gypsy and Traveller working group to produce a partnership approach in line with the Staffordshire Commissioners Office Illegal Encampment Group
- Creation of a Community Safety Forum to include community groups giving opportunities to discuss concerns or training requirements arising from the CSP plan.
- Pilot area for a community impact assessment toolkit to understand wider asylum dispersal issues

- Proactive management of the Homes for Ukraine Scheme with Staffs County Council and anchor VCSE organisations in Tamworth
- Promotion of community and Councilor VCSE grants
- Tamworth Borough Council have given a grant to ensure sustainability of the Tamworth Pride Event
- Positive communication plans coordinated with partners

[The Safest Places for Over 60s | SunLife](#) has named Tamworth as ranked 4th in the top 20 safest towns in England and Wales for people over 60 with Staffordshire being the Safest County in England and Wales.

Funding Implications

Contribution to USAH Is top sliced from the Locality Deal Fund to ensure that Tamworth Communities can access the service.

Community events have been included in the Locality Deal Funding

Next Steps

- Further Community Safety Partnership events planned at the Assembly Rooms to ensure the community continues to be updated and informed on community groups and support in Tamworth.
- Tamworth Borough Council is an active member of the Staffordshire Strategic Migration Partnership working to understand the wider community cohesion issues in respect of Asylum Seeker Dispersed accommodation.

Priority Theme 4: County Lines (Criminal Exploitation of Young People)

Background:

Tamworth, due to numerous factors, continues to be especially vulnerable to ‘County Line’ drug dealers, predominantly from the West Midlands urban conurbations.

These lines often prey on the disadvantaged and take advantage of some of the most vulnerable residents in the town.

The targeting of these comes under the force umbrella of Operation Engaged, bringing together intelligence, local policing and specialist resources.

Tamworth Local Policing Team (TLPT), Tamworth Borough Council (TBC), and Staffordshire Social Services have a longstanding relationship which sees the facets of these coming together with a joint aim of disrupting, detecting, and protecting the public of Tamworth.

Progress to Date:

Staffordshire Community Safety Partnership have continued to target those involved and have built up a strong working relationship which has seen considerable success and safeguarding take place and a marked decrease in the ability and willingness of ‘out of town’ drug dealers to enter the Town (confirmed by recent intelligence reporting).

2022 has been a successful year in terms of arrests and convictions arrests specifically around class ‘A’ drug dealing, which is achieved with the support of force wide resources including a disruption team and intelligence officers.

Through multi-agency work of the Community Safety Partnership, we have successfully protected vulnerable people from organised crime groups taking advantage of them and using their properties (known as Cuckooing) through using eviction powers. Protecting children where parents have been involved in drug criminality.

Recent Court cases have seen considerable sentences handed out as those arrested in the previous quarter having now reached both trial and sentencing dates.

Performance Issues:

Successful results are being achieved with arrests, convictions and safeguarding, despite competing resource demands but ideally this would be a daily focus.

In this reporting period the lower level of County Lines activity has continued, with only a handful of non-Tamworth lines identified into the Borough^[1].

There have been eight arrests specifically around class 'A' drug dealing, which have been achieved with the support of the Disrupt Team South and Force Intelligence.

Within this reporting period the Secondary School drug prevention scheme continues, seeing officers and third sector organisations (Betterway), attending schools delivering inputs and support.

Multi agency work continues with all parties, in particular TBC, Tamworth Social Services and Stars ('Human Kind' Drink & Drug Service), around supporting those who have been previously targeted or involved in the use of Class A drugs.

Whilst this period has seen considerable successes against County Lines and those involved in Class A drug dealing, this continues to be against a backdrop of competing demands for specialist resources.

Funding Implications:

Whilst the targeting of those committing criminality will continue and funding remains the remit of Staffordshire Police, the specific and targeted disruption of younger children and the involvement of third sector organisations should be considered in more depth.

Next Steps

To continue creating avenues of communication to gain a better understanding and new ideas for pathways available to disrupt youths and the specific roles and opportunities (tactics) available within the Tamworth Community Safety Partnership.

Recommendations:

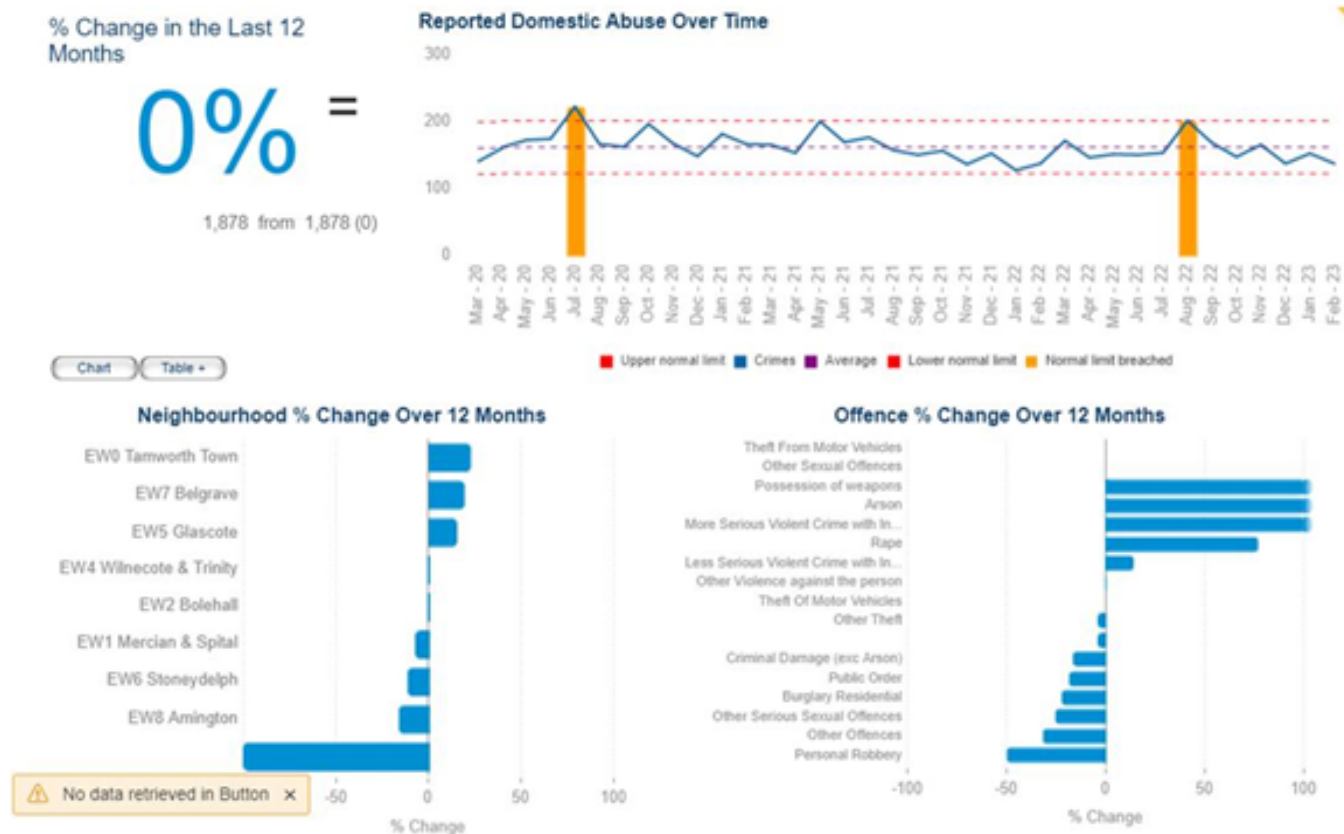
Opening the avenues for education around this area to other groups within the Community Safety Partnership and to find new agencies and groups to enhance this education.

Priority Theme 5:	Domestic Abuse Stalking & Harassment
--------------------------	---

Background

In this Domestic abuse priority theme, we have several members from the Community Safety Partnership engaged to support, support for refuge is from the Pathway project and base support is from New Era.

Progress to Date



MARAC (Multi Agency Risk Assessment Conference)

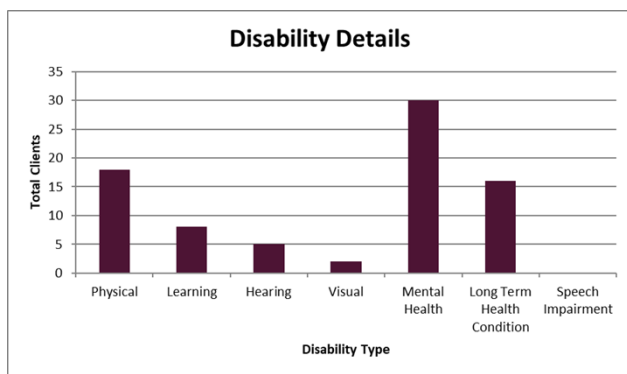
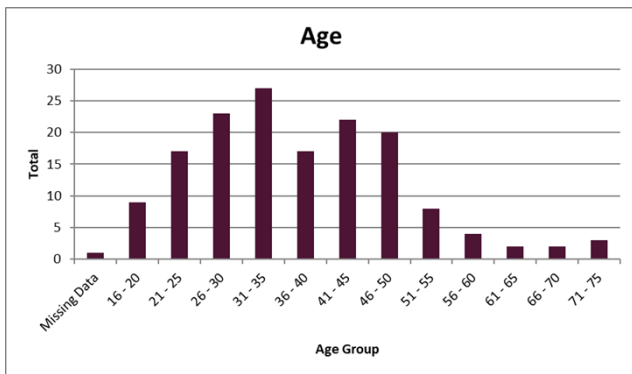
In the last year there have been 110 cases (17 were repeats) heard at the MARAC meetings that are now held on Teams ensure a good presence of the Tamworth Community Safety Partnership members.

There were 6 Domestic Violence Protection Notices (DVPNs) issued across the year followed by an application to the magistrates' court for a Domestic Violence Protection Order (DVPO).

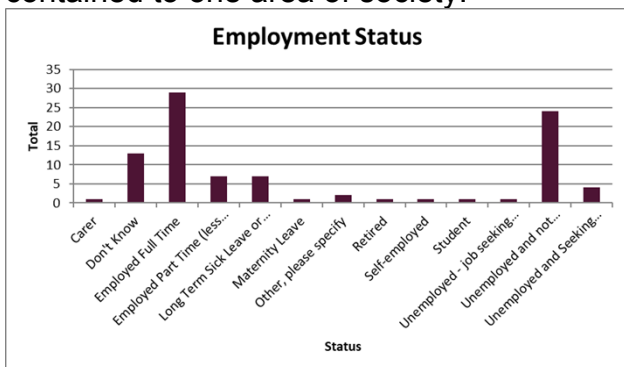
*A DVPN is an emergency non-molestation and eviction notice which can be issued by the police, when attending to a domestic abuse incident, to a perpetrator. Because the DVPN is a police-issued notice, it is effective from the time of issue, thereby giving the victim the immediate support, they require in such a situation. Within 48 hours of the DVPN being served on the perpetrator, an application by police to a magistrates' court for a DVPO must be heard. A DVPO can prevent the perpetrator from returning to a residence and from having contact with the victim for up to 28 days. This allows the victim a degree of breathing space to consider their options with the help of a support agency. Both the DVPN and DVPO contain a condition prohibiting the perpetrator from molesting the victim.

Refuge Accommodation

There has been a total of 155 adults who have used the refuge in Tamworth over the last year, most being in the age group of 21 – 50.



95% of these were women, 92% identified as British, 34% reported having a disability. The spectrum of backgrounds these adults come from is vast and identifies the issue is not contained to one area of society.



Over 66% reported vulnerabilities with 20% having more than one and 5% had a dual diagnosis ie mental health plus alcohol or drug abuse.

Of the service users through refuge 81 had children with them meaning 159 children passed through refuge too.

The average length of abuse was 109 months of those currently experiencing abuse:

- 90% experienced emotional abuse
- 34% financial
- 63% jealous/controlling behaviour
- 51% physical
- 21% sexual
- 33% surveillance/harassment/stalking

Of historical disclosures, 45% were sexual

49% felt depressed or had suicidal thoughts, 12% had received threats to kill, 11% had self-harmed to cope.

38% disclosed that this wasn't their first adult domestic abuse relationship and 17% disclosed that they had witnessed abuse as a child.

Sexual Abuse Support Statistics have been supplied by SARAC have shown a significant rise in the number of people seeking support from professionals regarding sexual abuse in the Tamworth area.

	Adults	YP's	Total
Jan-March 2020	10	6	16
April 2020 - March 2021	29	12	41
April 2021-March 2022	42	27	69

April 2022-December 2022 NOTE 8 MONTHS	31	15	46
Total Tamworth Referrals	112	60	172

New Era had 120 referrals from the Tamworth area between April- June 2022. All were offered support, 87 agreed the service.

Performance Issues

Both the baseline Domestic abuse support service and refuge are due for recommissioning this year, the tender is looking to provide a longer-term contract to provide some security to the providers and a dispel the postcode lottery attached to these services.

Sarac are finding locations in Tamworth difficult to find they pay for premises currently to support some young people one day a week. There is outreach work in schools, but a location elsewhere is essential especially during school holidays. Adult Clients attend the main base in Burton-Upon-Trent.

Recommendations

A need to secure suitable premises for both SARAC and New Era for workers to meet clients in the Tamworth area securely.

Tamworth Community Safety Partnership is made up of several organisations who campaign and educate the community independently of each other. Therefore, a review of domestic abuse messages and educational campaigning is underway to join resources to create more impactful messages for the community.

Priority Theme 6: Serious Violence / Knife Crime

Background

Within Tamworth there has been an increase in reports of knife related violence both in and out of school premises. The perception of reports around children / youths carrying knives has increased following engagement sessions with the community and reported incidents.

A structured plan has been put in place to attend all the high schools within the Tamworth area, to conduct interventions around county lines, knife crime and drugs.

This will be a 4-step approach consisting of the following actions:

1. Notifying parents – letter sent out to all parents (usually via the school) informing of the operation. This letter will provide dates of police attendance for educational sessions and provides links to key websites around session topics.
2. Engagement – presentations are conducted by Police around county lines, exploitation, knife crime and drugs. There is also an input by Peter Griffith CEO/Founder of Better Way Recovery which provides students with a hard-hitting, lived experience around these topics.
3. Further localised engagement within the school whereby officers will be present for two days to work with pupils that are believed, by the school, to be at risk.
4. Enforcement – 2 days of action within and around the school. This will include weapon sweeps, support from a drugs dog and officer activity at key locations / times.

Progress to Date

Serious violence

% Change in the Last 12 Months

35%

84 from 62 (22)

Reported Crime Over Time

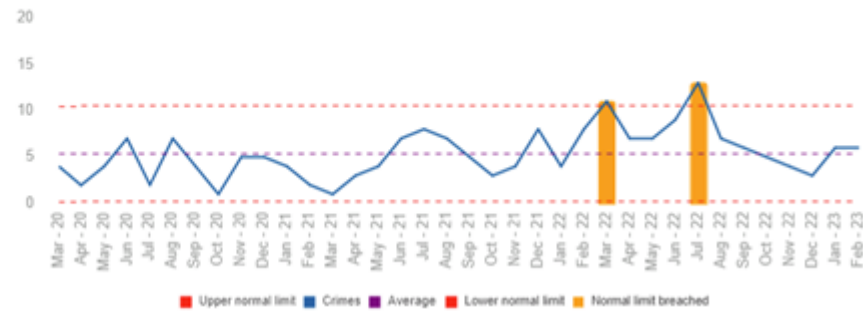


Chart Table

Neighbourhood	Crimes	Difference	% Change	Sub-Offence	Crimes	Difference	% Change
EW8 Amington	18	15	500%	Other Violence against the person offences	22	22	
EW0 Tamworth Town	23	8	53%	Endangering Life	2	1	100%
EW2 Bolehall	6	2	50%	Sec 20 Malicious wounding	29	14	93%
EW7 Belgrave	9	3	50%	Sec 18 GBH	31	-12	-28%
EW1 Mercian & Spital	9	1	13%	Attempt Murder		-2	-100%
EW4 Wilnecote & Trinity	10	-1	-9%				
EW5 Glascoate	5	-1	-17%				
EW6 Stoneydelph	6	-2	-25%				
		-1	-100%				

Knife related crime

% Change in the Last 12 Months

-31%

41 from 59 (-18)

Reported Crime Over Time



Chart Table

Neighbourhood	Crimes	Difference	% Change	Offence	Crimes	Difference	% Change
EW4 Wilnecote & Trinity	9	1	13%	Business Robbery	3	3	
EW0 Tamworth Town	12	1	9%	Other Violence against the person	3	0	0%
EW2 Bolehall	5	0	0%	Personal Robbery	13	-1	-7%
EW8 Amington	4	-2	-33%	More Serious Violent Crime with Injury	15	-8	-35%
EW1 Mercian & Spital	5	-3	-38%	Less Serious Violent Crime with Injury	7	-11	-61%
EW7 Belgrave	4	-3	-43%	Other Serious Sexual Offences		-1	-100%
EW5 Glascoate	1	-6	-86%				
EW6 Stoneydelph	1	-6	-86%				

Performance Issues

Resourcing and timing is an issue in relation to timings is an issue due to this operation having to be balanced with day-to-day policing and a full education criteria for schools.

Funding Implications

Applications are being made for funding to continue this project which includes a donation for the charity Better Way Recovery for Peter Griffith CEO/Founder of Better Way Recovery to provide students with a hard-hitting, lived experience to support the ongoing work within the schools and for a drugs dog / handler.

Next Steps

Continue to roll out the project across all Tamworth schools.
Knife bins have been purchased by the Tamworth Community Safety Partnership for allocation around the Tamworth area for public reassurance.

Recommendations

Education is key for this complex national issue. This element of work should be treated as a foundation for further work and not treated in isolation.

This programme should be repeated every 3 years to ensure that all students are provided with the inputs.

Priority Theme 7:	Vulnerable Persons and Contextual Safeguarding (including drugs, alcohol, and mental health)
--------------------------	---

Background

TVP Figures Jan- March 2023	57 cases referred to TVP in 2022
Youth ASB	3
Repeats	7
Community Triggers	1

Progress to Date

The daily briefings on Monday and Thursday mornings continue to take place with still a good response from agency involvement.

The Tamworth Vulnerability Partnership (TVP) continues to meet weekly with the role of chair being shared between Sergeant Lauren Buckle and the Community Partnerships Manager Karen Clancy.

We have seen an increase with professionals meeting being held due to the nature of concerns and needing to put more time into discussions and support to be offered.

Performance Issues

Further information required from referrers regarding what outcomes they want to achieve.
Information follow up sometimes needed.

Funding Implications

N/A

Next Steps

To continue the daily briefings on a Monday and Thursday as these provide to be useful for all agencies to seek information about vulnerabilities in the borough and offer the right support were needed. We also continue to welcome new professionals to this information sharing process such as other housing landlords and a mental health contact for housing support.

Recommendations

N/A

Additional Information:

In addition to TVP and Daily briefings the partnership team attends several meetings to support this priority some being:

- Mental Health Network Forum
- Tamworth Community Wellbeing Partnership
- Covid19 Partnership
- Ukraine Meetings
- Modern Slavery/Human Trafficking Meeting
- Domestic Abuse Safer Accommodation Meeting
- Anti-Social Behaviour Meeting
- Dementia Friendly Communities Meeting
- Corporate Social Responsibility meetings with the Councils Contracted Housing Repair providers (Waites and Engie)
- Multi Agency Child Exploitation (MACE) Panel Meetings
- Community Safety District Leads Meeting
- Housing Allocations Meetings
- Harassment and Threat (HAT) Meeting
- Safeguarding Children's Board Training Group Meeting

The Community Partnerships Officer has regular update Meetings with New Era, The Pathway Project, Harmony, and Victims Gateway.

The Partnerships Vulnerability Officer completes annual section 11 audits in line with working together and Annual Adult Safeguarding Audits.

Tamworth Borough Council have commissioned several organisations to offer support to vulnerable people:

the **Citizens Advice** to deliver the Tamworth Advice Centre Service for financial wellbeing, debt, and generalist advise.

Tamworth Samaritans provide Outreach services to reach some of our most vulnerable.

Better Way Recovery has been funded to offer support for drugs and alcohol addiction starting on 2 days per week from CTCIC Offices.

Fun Club who provides outreach work and group work for young people causing perceived Antisocial behaviour issues in the area

Tamworth Borough Council offers grants to support local voluntary and community groups to provide services. The following grants are available:

- Community Grants (Up to £1000)
- Councillor Grants (Each Councillor has £300 to spend in their ward, total £9000 allocation)
- Festive Grants (£3000 allocation for Festive Grants to support social isolation during the festive period)

The Community Partnerships Officer has developed a Campaigns Calendar to support and promote various campaigns throughout the year.

